



How mapping becomes universal

# GeoQlik™

The mapping extension for QlikView

**Quick start guide for GeoQlik trial**

## Summary

<b>Quick Start Guide</b> .....	<b>3</b>
<b>1. Downloading and installing the extension</b> .....	<b>3</b>
<b>2. Getting started with the GeoQlik demonstration document</b> .....	<b>3</b>
<b>3. Adding GeoQlik trial to a new QlikView document</b> .....	<b>4</b>
<b>4. Making your data match the GeoQlik data</b> .....	<b>5</b>
<b>5. Additional notes</b> .....	<b>6</b>

## Quick Start Guide

Thank you for choosing GeoQlik trial version for Qlikview 11. This document will teach you how to get started with the GeoQlik trial extension.

For more information about GeoQlik trial version, visit our website: <http://demo.geoqlik.com>

### 1. Downloading and installing the extension

You can get the latest version of the GeoQlik trial extension at <http://demo.geoqlik.com/geoqlik/GeoQlikTrial.qar>

Once the qar file is downloaded, open it with QlikView desktop. The following message will appear to let you know the extension was properly installed:




### 2. Getting started with the GeoQlik demonstration document

A demo document is available for download at:

[http://demo.geoqlik.com/geoqlik/ressources/htdocs/docs/Sales\\_Management\\_GeoQlik\\_Trial.qvw](http://demo.geoqlik.com/geoqlik/ressources/htdocs/docs/Sales_Management_GeoQlik_Trial.qvw)


This document contains the GeoQlik extension object with a dimension that matches a cartographic field of the US states layer. Once the document is opened and the GeoQlik extension is loaded you will see the following splash screen:



Click the  button to close the splash screen and start using GeoQlik.

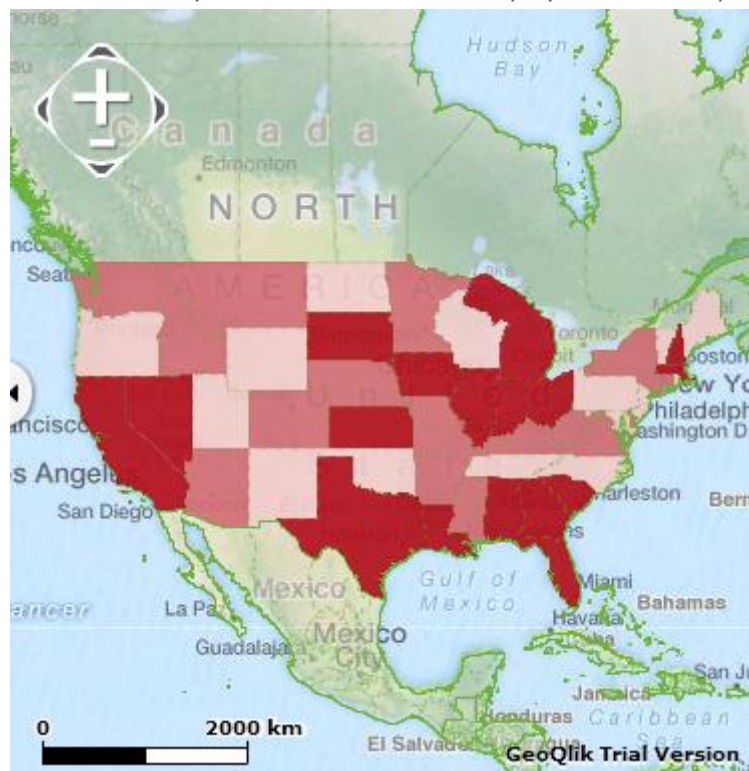
Click the **+ New analysis** button to create an analysis that will display some document data on the map.

The first screen of the analysis creation wizard asks you which geographic field matches the dimension. Since the extension object is already properly configured you can keep the default value and click **Next**.

The next screen asks you what kind of analysis you want to use. The first row contains analyses that display only one indicator while the second row contains analyses that use several values. Select the classes analysis (  ).

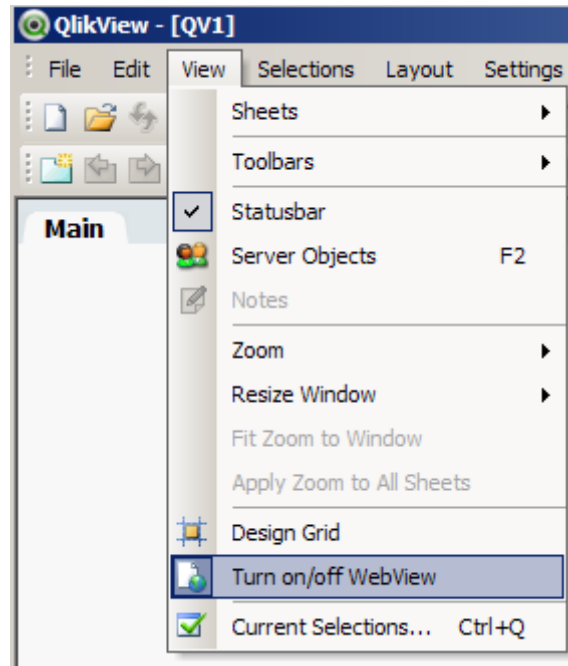
In the following screen you will be asked for an analysis label and the QlikView expression that will be used to get the analysis values. Use “Sales” as the label and “sum (SalesAmount)” as the expression and click **Finish**.

Your first analysis will be created and displayed on the map:



### 3. Adding GeoQlik trial to a new QlikView document

To create a GeoQlik object in a QlikView document you first have to switch to webview mode: in QlikView desktop click on the “View” menu and turn on the WebView mode by clicking the “Turn on/off WebView” item:



Once in webview mode you can add the GeoQlik trial extension:

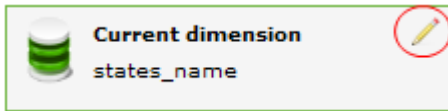
1. Right-clicking the document
2. Select the "New sheet object" item
3. Open the "Extension objects" panel
4. Click and drop the GeoQlik trial extension on the document sheet



## 4. Making your data match the GeoQlik data

In order to display indicators on the GeoQlik object, the object dimension field has to match a field of a geographic layer. The GeoQlik trial version provides only 3 layers: continents, countries and provinces. You can download the field values as CSV files from <http://demo.geoqlik.com>.

Once the data has been added to your QlikView document, you have to set the active dimension of the GeoQlik object to a field that matches the geographic fields by clicking the pencil button:



When you create an analysis you have to select the geographic layer and the field that matches your current dimension on the first wizard screen. You can now create analyses with your own data like explained in section 2.

## 5. Additional notes

As this extension is a trial version of the GeoQlik extension it has several restrictions compared to the full version:

- You can only use the 3 cartographic layers provided by the GeoQlik trial server. Adding your own cartographic data is impossible.
- You cannot save your map configuration. All your analyses settings will be lost once the document is closed.

GeoQlik uses a Flash component to display maps, so you will need Flash Player installed to be able to use it (you will need the x64 version of Flash Player to use GeoQlik in QlikView desktop x64).

There is a bug in the initial release of QlikView 11 that prevents mouse events to be caught by flash objects. You need QlikView 11 SR1 or above to fully use GeoQlik.